

***DDS Filippo Cardarelli***  
Dentist  
*Specialist in Orthodontics*



# 1st Skeletal class

Patient 7 years old, Skeletal Class 1, hyperdivergent, upper arch contraction with reduced space for eruption of permanent teeth, upper and lower tooth crowding.

**The therapeutic sequence involves the following steps:**

- Motivation
- 14-month elastodontic therapy (Amcop S Integral)

DDS Filippo Cardarelli

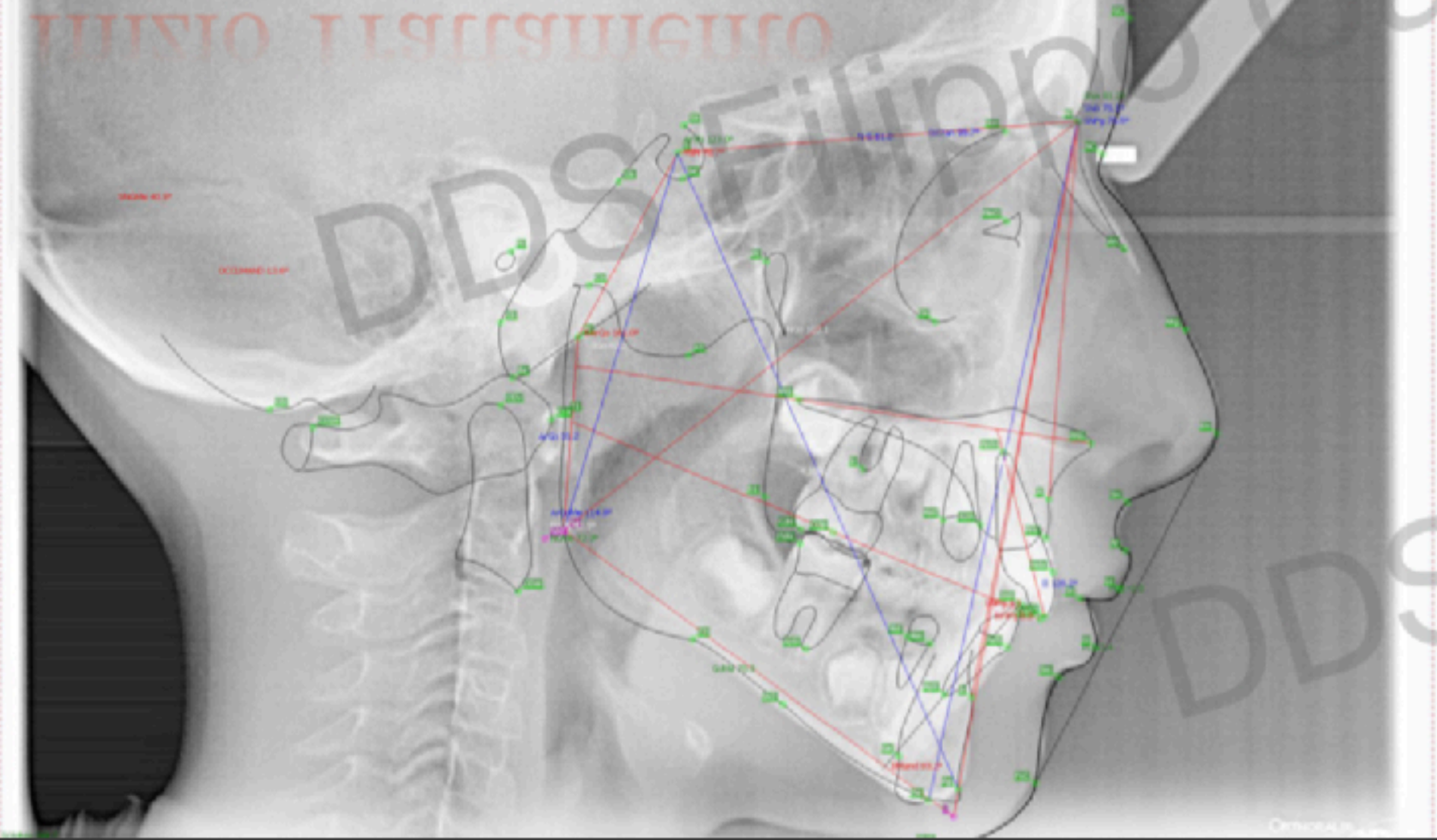






# Valori Cefalometrici Inizio Trattamento

DDG Filippo



## Cephalometric Values Start of Treatment

<b>ANB</b>	<b>6,0</b>
<b>SNA</b>	<b>79,00</b>
<b>SNB</b>	<b>73,00</b>
<b>SArGo</b>	<b>160,0</b>
<b>ArGoMe</b>	<b>114,00</b>
<b>liMand</b>	<b>93,00</b>
<b>IsCran</b>	<b>99,00</b>
<b>II</b>	<b>126,00</b>



















# *AMCOP S Integral*





# Therapy

The patient is treated with a single Amcop S Integral elastodontic appliance with the purpose of creating expansion of the arches so as to restore proper tooth eruption. The duration of the therapy is about 14 months; the appliance use for the first 6 months was 1 hour during the day and all nights and the subsequent ones only at night.

At the end of elastodontic therapy, germectomies of 18-28-48 are done. The case does not require post elastodontic restraint.

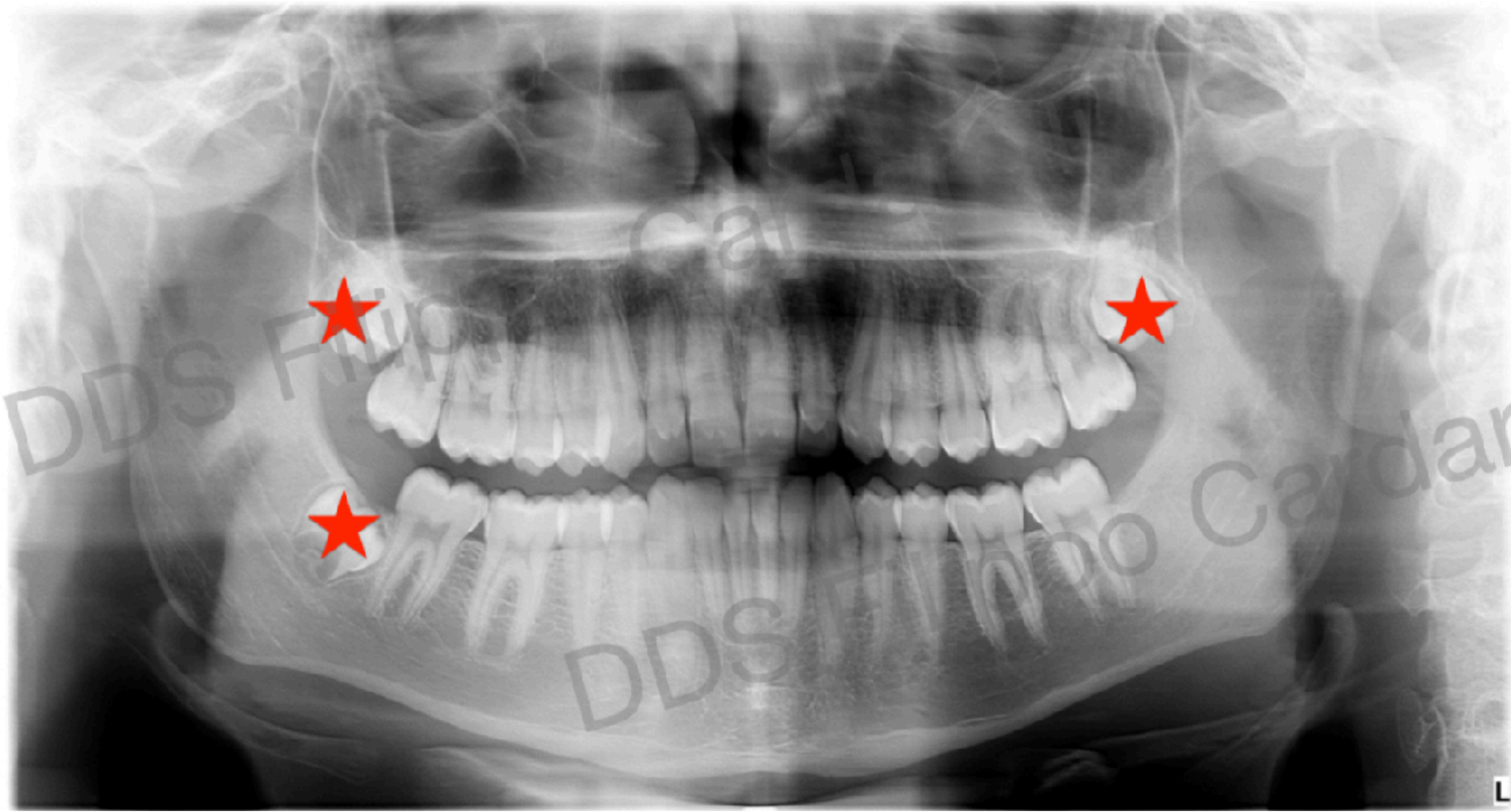






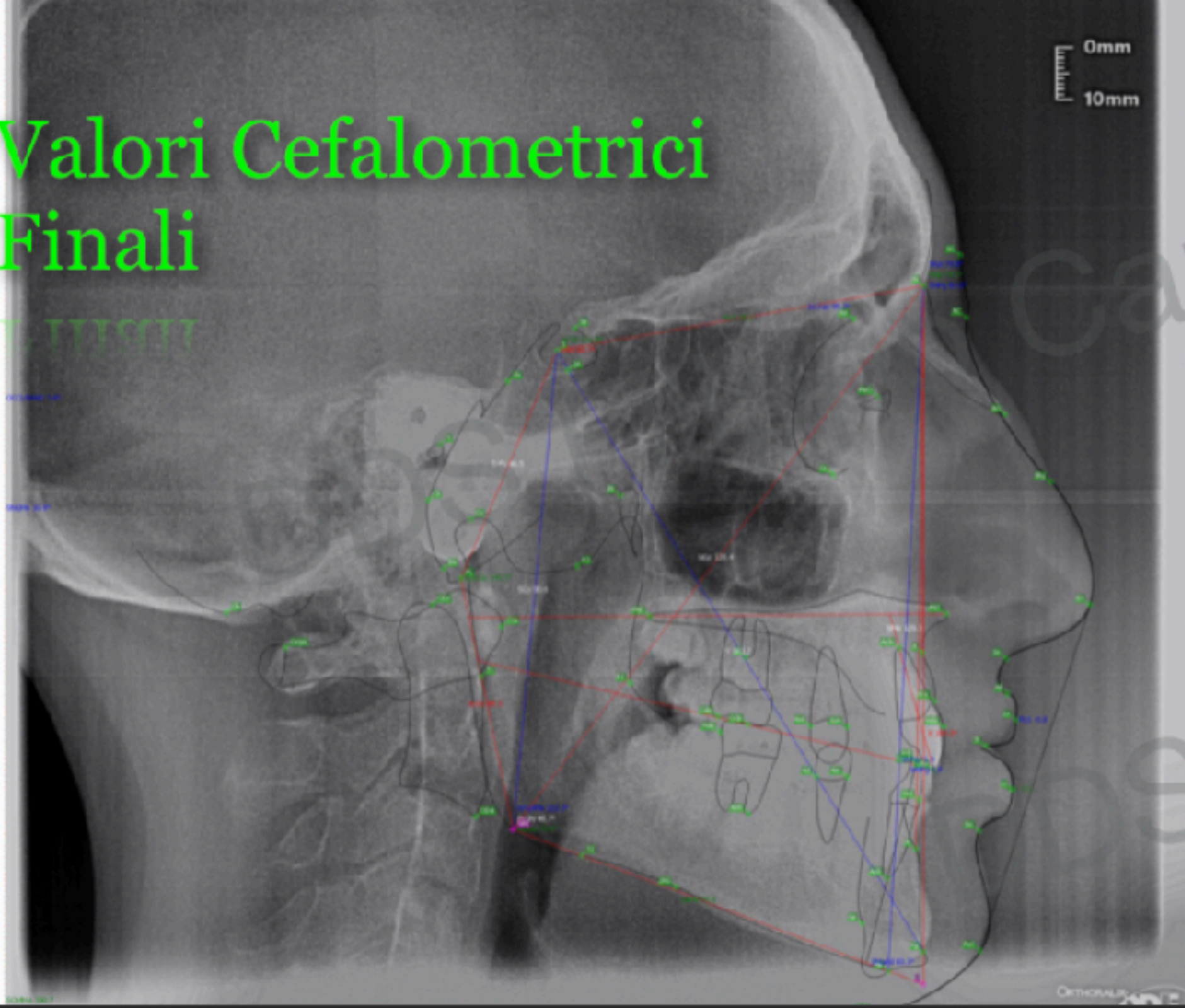








# Valori Cefalometrici Finali



## Final Cephalometric Values

ANB	1,0
SNA	80,00
SNB	79,00
SArGo	145,0
ArGoMe	122,00
IiMand	83,60
IsCran	95,00
II	146,00













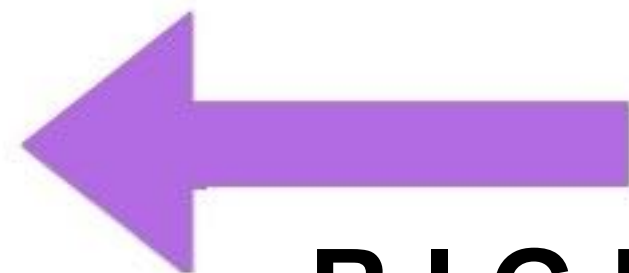




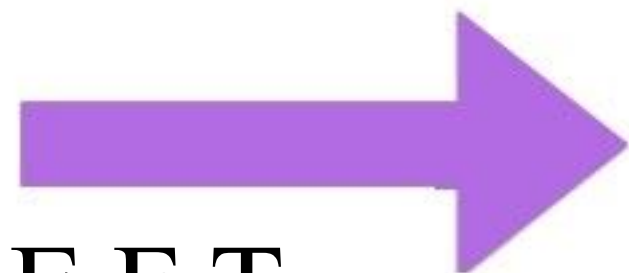




PROTRUSIVE



RIGHT



LEFT



# Conclusions

Class 1<sup>st</sup> malocclusions characterized by mild upper and lower dental affollament, hyperdivergent, require the use of a flat mastication plane (Amcop Integral) in order to promote transverse development and facial divergence control simultaneously.

The case shows how very often through a single elastodontic phase in mixed dentition it is possible to achieve good intercuspation without the aid of other appliances. Should there be a need for a final finishing, it will only be for case completion and in any case will be easy to perform with the advantage of obtaining a final stability resulting from the function .

*DDS Filippo Cardarelli*